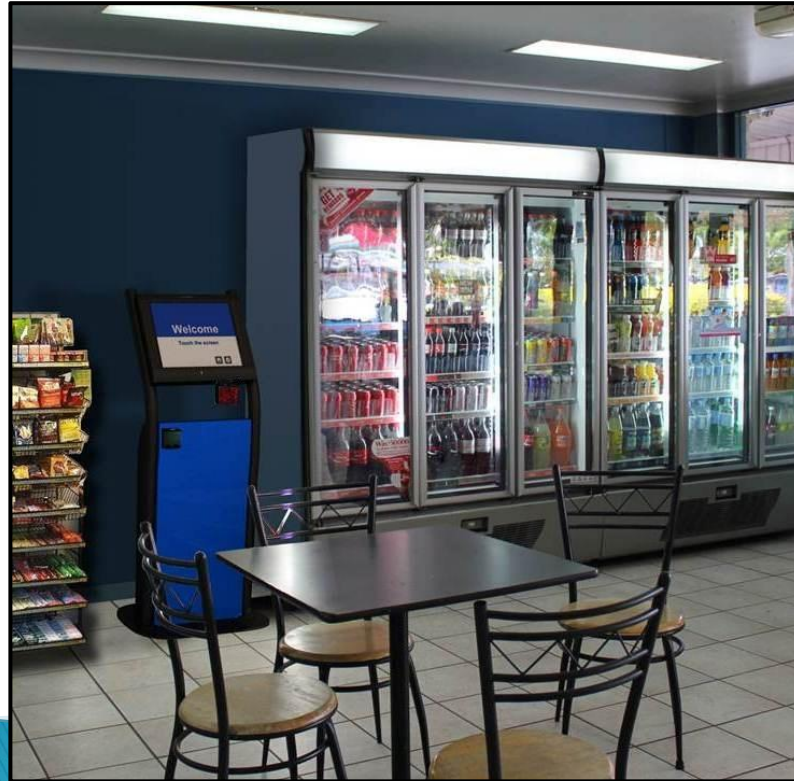


## Self Check-out Market



*Convenience • Speed • Selection...we have it all!*

# MICROTRONIC US

*cashless systems*



**Many display styles to choose from,  
to fit any area....large or small.**

# MICROTRONIC US

cashless systems



❖ Reach-in Coolers



Give your employees

- Fresh sandwiches
- Fruit
- Salads
- Frozen foods
- Dessert

Items that won't fit  
in a vending machine



❖ Ice cream freezers





**Pay directly at the Coffee machine or Fountain Drink for a quick easy check out without going to the Kiosk**

# MICROTRONIC US

cashless systems

Preload at the  
Loading Station  
with Cash & Credit/Debit Card  
to any variety of  
the Microtronic Media

Make your selections  
then check-out at the Kiosk

*Convenience • Speed • Selection*

Kiosk can  
be wrapped  
to meet your  
specifications  
*\* Printer optional*





**Including our 4 Channel Smart Phone  
Compatible DVR Security System with  
4 Indoor/Outdoor Night Vision motion  
activated, Surveillance Cameras for  
the best in break room security**

# Reports

- Products Sold
- Stock Levels
- Transaction Log Report
- Product Sales Chart

ProductsSold [Compatibility Mode] - Microsoft Excel

Home Insert Page Layout Formulas Data Review View

Clipboard Paste Paste Paste Font Alignment Number Conditional Formatting Cell Styles

G91

Products Sold

Date From: 9/1/2011  
Date To: 9/30/2011  
Device(s): All  
Location(s): Demo Site

Device	Product	Qty	Amount
Demo - Demo Site	Caffeine Free Diet Mt Dew 20oz	2	\$2.20
Demo - Demo Site	Wonka Bar	5	\$11.00
Demo - Demo Site	Cheerwine Can 12oz	1	\$12.12
Demo - Demo Site	Aquafina Grape Water 20oz	18	\$21.60
Demo - Demo Site	M&M Plain 1.69z		
Demo - Demo Site	Cherry Crush Can		
Demo - Demo Site	Orville Butter Popcorn		

ProductsSoldReport

Stock Levels [Compatibility Mode] - Microsoft Excel

Home Insert Page Layout Formulas Data Review View Add-Ins

Clipboard Paste Paste Paste Font Alignment Number Conditional Formatting Cell Styles

V59

Stock Levels

Device(s): All  
Location(s): All

Device Name	Category	Description	Stock Code	Needed	Qty	Is Low
Demo - Demo Site	Snacks	Wonka Bar	Wonka	14	6	No
Demo - Demo Site	Drinks	Caffeine Free Diet Mt Dew 20oz	CF Dr.Mt D	7	8	No
Demo - Demo Site	Snacks	Orville Butter Popcorn	Butter Popcom	9	1	No
Demo - Demo Site	Drinks	Cheerwine Can 12oz	Cheer Can	9	1	Yes
Demo - Demo Site	Drinks	Aquafina Grape	Grape Water	19	1	Yes

Stock Levels

Transaction Log [Compatibility Mode] - Microsoft Excel

Home Insert Page Layout Formulas Data Review View Add-Ins

Clipboard Paste Paste Paste Font Alignment Number Conditional Formatting Cell Styles

T22

Transaction Log Report

Date From: 9/1/2011  
Date To: 9/1/2011  
Device(s): All  
Location(s): All

Device Name	Transaction Type	Account Code	Transaction Time	Inventory Product	Amount
Demo - Demo Site	Debit	3349	9/13/2011 07:42 AM	Caffeine Free Diet Mt Dew 20oz	\$1.10
Demo - Demo Site	Debit	3421	9/14/2011 08:02 AM	Caffeine Free Diet Mt Dew 20oz	\$1.10
Demo - Demo Site	Debit	3421	9/14/2011 08:08 AM	Wonka Bar	\$1.25
Demo - Demo Site	Debit	3482	9/15/2011 08:59 AM	Cheerwine Can 12oz	\$1.10
Demo - Demo Site	Debit	3482	9/15/2011 08:59 AM	Wonka Bar	\$1.25
Demo - Demo Site	Debit	3312	9/15/2011 09:57 AM	Aquafina Grape Water 20oz	\$1.20
Demo - Demo Site	Debit	3367	9/15/2011 11:58 AM	Aquafina Grape Water 20oz	\$1.20
Demo - Demo Site	Debit	3402	9/16/2011 12:12 PM	Aquafina Grape Water 20oz	\$1.20
Demo - Demo Site	Debit	3378	9/16/2011 12:20 PM	Aquafina Grape Water 20oz	\$1.20
Demo - Demo Site	Debit	3348	9/16/2011 12:23 PM	Aquafina Grape Water 20oz	\$1.20

TransactionLogReport

sales chart report [Compatibility Mode] - Microsoft Excel

Home Insert Page Layout Formulas Data Review View Add-Ins

Clipboard Paste Paste Paste Font Alignment Number Conditional Formatting Cell Styles

A1

Product Sales Chart

Sales By Date

Date	Sales Amount (\$)
9/13/2011	\$11.00
9/14/2011	\$11.00
9/15/2011	\$16.72
9/16/2011	\$5.92
9/22/2011	\$7.06
9/23/2011	\$7.06
9/26/2011	\$7.06
9/28/2011	\$7.06
9/29/2011	\$9.26
10/4/2011	\$16.05
10/5/2011	\$11.77
10/6/2011	\$18.12
10/8/2011	\$17.12
10/9/2011	\$3.21
10/10/2011	\$5.35
10/11/2011	\$12.84
10/11/2011	\$5.35
10/11/2011	\$7.48
10/11/2011	\$5.35
10/2/2011	\$5.35

**Contact your vending supplier and ask for the  
Microtronic Self Check-out Market  
or call:**

**1-800-879-3586 for more information**

*(If you must have Vending Machines...our  
Readers will work on those as well!)*

